



IN OUR OWN VOICE

THE OFFICIAL NEWSLETTER OF THE
WOMEN'S HISTORY MUSEUM & EDUCATIONAL CENTER

Global Artistic Connections at the Women's History Museum

By Sue Gonda, Ph.D., Curator

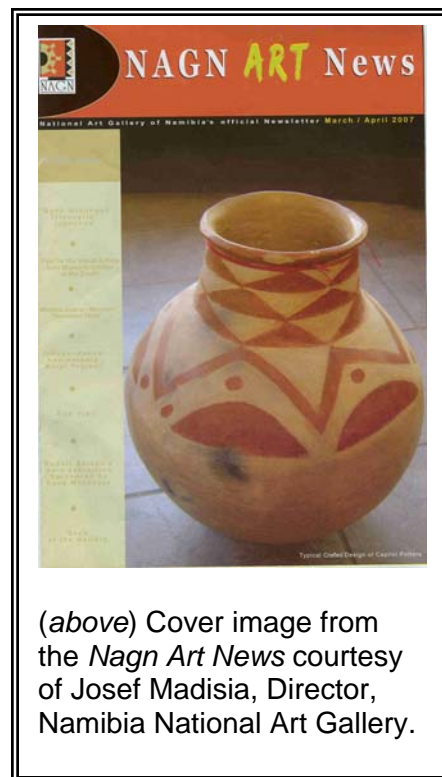
A week ago, the WHM scheduled a visit from Josef Madisia, Director of Namibia's National Art Gallery. Mr. Madisia was traveling through the U.S. State Department's International Visitor Leadership Program, and he specifically requested to see the Women's Museum in Dallas, our Women's History Museum & Educational Center, and the Cowgirl Museum. I met with him for an extraordinary two hours. His goal was to discover how museums educate the general public and specialized audiences, learn about museum educational practices and to initiate contacts with us in the United States.

He was impressed by the breadth of our educational programs and the creative ways we've made women's experiences visible. He took copious notes, frequently commenting on tools we use that he found most remarkable: the 8-minute video about WHMEC made by KPBS, the DVD of video vignettes about the women inducted into the San Diego County Women's Hall of Fame, the library and displays, and finally, both the traveling exhibit, "Women Who Dare" and the Hall of Fame induction ceremony. So I was stuck dumb (a rarity) when he asked, "Why aren't you in a big building of your own where people can learn from you, like other large museums here?"

My answer was that we are still largely a volunteer-based organization, but that we're growing in leaps and bounds and are perched to move when we secure the funds and the location. He nodded, saying he understood the difficulties of funding, but added that he felt, after all his travels, that what we are doing is

extraordinary and deserves a high profile. We discussed the possibility of me or other WHMEC representatives going to Namibia to talk about the WHMEC and about women's history in the United States.

I told Mr. Madisia that he, too, was extraordinary for the interest he is taking in women's museums. He searched for the words to express why he felt it was important, talking about the limited representation women have in Namibia. I said that, for me, this work was all about making women more visible in our country by exposing all they had done. He nodded, talking about being invisible as a black under Apartheid, and said that that is why his goal is to preserve and display culture that represents women as well as men in this post-Apartheid time. He told me about teaching his children Nama, a language forbidden under Apartheid. He is working to preserve traditional art across Namibia, a country as varied in its people as its geography – from the Atlantic coastal areas to the inland Kalahari Desert. —(Continued on p. 2).



(above) Cover image from the *Nagn Art News* courtesy of Josef Madisia, Director, Namibia National Art Gallery.

Inside this Issue:

Historian's Report	1
Community Outreach Update	2
New Faces at the WHMEC	3
Members & Donors Corner	3
Archivist Report & Calendar	4
Volunteer Profiles & Spring Program Highlights	5
President's Message	6

The mission of the WHMEC is to educate and inspire present and future generations about the experiences and contributions of women by collecting, preserving and interpreting the evidence of that experience.

HONORARY BOARD OF TRUSTEES

Jane Dumas
Bill Hawkins

BOARD OF TRUSTEES

Olivia Puentes-Reynolds

Ashley Gardner

Shirley DeCourt Park

Gracia Molina de Pick

BOARD OF DIRECTORS

Ashley Gardner, President

Sarah Hurd, Vice-President

Heather Dauler, Operations Director

Amanda Dahl, Interim Treasurer

Emelyn dela Pena, Secretary

Larry Baza, Funds Development

Olivia Puentes-Reynolds, Treasurer

Vickie Butcher

Anne Hoiberg

Gracia Molina de Pick

MANAGERS & STAFF

Sarah Williams, Ph.D., Executive Director

Sue Gonda, Ph.D., Curator

Devon Atchison, Ph.D., Archivist

Irene Lara, Ph.D, Oral History Director

Jaime Lyerly, Curatorial Assistant

Jennifer Spencer, Exhibit Artist

Gary Stephenson, IT Coordinator

Kathleen Wheatley, Library Director

ADVISORS

Li Huai, MFA, Artistic Advisor

FOUNDER

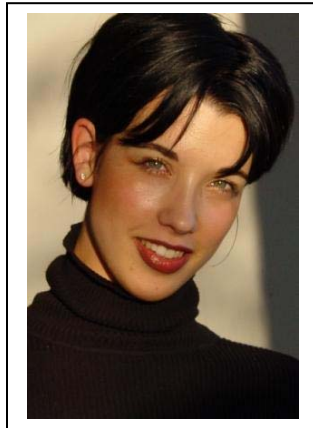
Mary Maschal (1924-1998)

In Our Own Voice is a quarterly newsletter published by the WHMEC
2323 Broadway Street, Suite 107
San Diego, Calif. 92102

Sarah Williams
Editor and Production

Community Outreach Update

By Sarah Hurd, Vice President for External Relations



On May 20th, 2007, WHMEC volunteer Anthony LaRue and I staffed the **Taste of the Arts Festival** in Chula Vista. It was a great collaborative event with the San Diego Museum Council; as it not only gave us more much needed exposure, but also further developed our relationship with other members of the Museum Council.

There has also been more interest expressed amongst **League of Women Voters** members about the Women's History

Museum, and I will be making efforts to arrange a League tour of the WHMEC during the summer. It would be wonderful to coincide it with our Women's Suffrage Anniversary Celebration in August.

On April 22nd, 2007, we participated in the **Earth Day Fair** celebration in Balboa Park by having a procession in the parade. We had a strong group of roughly 20 youth and adult volunteers—and a few super cute dogs! We were a crowd favorite, especially amongst some of the Earth Day Fair organizers.

The WHMEC will also be present again this year at the 9th Annual **Old House Fair** in South Park on June 16th, 2007. Stop by the fair at 30th and Beech or volunteer to help staff our booth!

—(Continued from p. 1) He spotted the Kumeyaay baskets and pots in our display case. He pulled out a publication from Namibia's National Art Gallery, and on the cover was a pot remarkably like the one in our case, on the back, a basket equally similar to ours. "We are not so far apart, our peoples," he said. As I report this to you, I fear this sounds cliché, but it was one of those moments in life when you feel a physical as well as mental click—a connection that cannot be faked.

The Kumeyaay basket, tightly woven from dyed juncos fiber, is a reminder of the artistry and food preparation work of "All Our Grandmothers," (as the WHMEC exhibit is called) 100 years ago and more. It is also a reminder of the connections between women, between cultures, and more: it reminds us never to forget the struggles of native peoples of the earth's continents, and how culture can be the political and spiritual tool to restore and preserve nations and their peoples.

New Faces at the Women's History Museum!



Heather Dauler, J.D.

Heather Dauler joined the WHMEC board in early 2007 as the Operations Director. She formerly served as Chief of Staff for the Capital Center for Government Law and Policy in Sacramento, Calif. Heather currently works for the County of San Diego leading public safety projects and advising on public policy matters. She is active in the community through other organizations such as the Juvenile Court Book Club and USA Leadership Corps.



Amanda Dahl, Interim Treasurer

Amanda has been a volunteer with the WHMEC for almost one year, updating and organizing the museum's financial systems. She is an accounting manager with a degree in finance. She has experience in a variety of industries and specializes in assisting start-up firms through growth and building accounting departments.

WHMEC and the United Way!

Please remember the Women's History Museum when donating to the **United Way** through your employer. It's a fast, easy and reliable way to help support the museum and its mission. Ask your employer about **United Way** contributions or call **Sarah at 619-233-7963** to set up your donation!

Membership and Donors Corner

Judy Altman
 Anna Andrade
 Rachael Ashley-Schrierer
 Devon Atchison
 Hisae S. Batchelder
 Larry Baza
 Charles & Ruth Billingsley Foundation
 Dian Black
 Ginger Blackmon & Mary Logomasini
 Winelda Blum
 Rebecca S. Booth
 Patricia Born
 Mary Brown
 Sue and F. Robert Brush
 Marie Buckley
 Margaret Budd
 Francine Busby
 Vickie Butcher
 California Music Studios
 Linda and Edgar Canada
 Nona Cannon
 Laurie Carlock
 Molly Cartmill, Sempra Energy
 Joan T. Casale
 Susan Cayleff
 Evelyn L. Clarke
 City of San Diego
 Barbara Cohen
 Nancy Coker
 Carol Council
 Susy Creamer & Sue Willis
 Nadine Dailey
 Phyllis Davis
 Emelyn dela Pena
 Paul Dobson
 Clara Doss

Paula Doss
 Kristine & Robert Downey
 Nick Elliott
 Cecelia Erickson
 Lourdes Felix
 Angela Feres
 Shirley Ferrill
 Barbara Fitzsimmons
 Millicent D. Froehlich
 Councilmember Donna Frye
 Kay L. Furrer
 Georgianna K. Galas, M.D.
 Peter Meisen and Ashley Gardner
 Deborah Garvin
 Ethel George
 Kathryn Gestiehr
 Harriet Gill
 Anita Gillett
 Edith Glassey
 Sue Gonda
 Edward E. Gray
 Grrrrl Zines A-Go-Go
 Susan Haber
 Juanita Harrell
 Clara Harris
 Bill Hawkins
 Ruth Hayward
 Ruth Heifetz
 Suzanne & Lawrence Hess
 Dorothy Hewes, PhD
 Anne Hoiberg
 Doris A. Howell, M.D.
 Patricia Hughes
 Sarah Hurd
 Lucy L. Killea, Ph.D.

Marti Kranzberg
 Janet Lancaster
 Denise Legrand
 Vicki Leon
 Deborah Lindholm
 Nancy March
 Barbara McCurtis
 Marjorie McLaughlin
 Lillian Miller
 Janathin Miller
 Anita Merritt
 Janice Minor
 Evelyn Mitchell
 Margaret A. Moody
 Victoria & Stephanie Moody-Geissler
 Thomas & Mary Nee
 Midge Neff and Bill LeClair
 Elaine Nelson
 Florence Nemkov
 Rex Paris
 Shirley de Court Park
 Gloria Penner
 Magdalena Peraza
 Darlene R. Philipp
 Gracia Molina de Pick
 Mildred (Millie) Pilot
 Bonnie Burns Price, Ph.D.
 Lita Reynolds
 Olivia Puentes-Reynolds
 Cynthia Rich
 Susan Richardson
 Supervisor Ron Roberts
 Barbara Rolando
 Judy Rosselli
 Amanda Roth

James Royle
 Mary Revere Russell
 Eileen Samuels
 San Diego Woman's Club
 San Diego National Bank
 Brina-Rae Schuchman
 Bonnie Kime Scott
 Barbara Shaver
 Edwina Shell-Johnson
 Marcia Showley
 Christine Shultz
 Supervisor Pam Slater-Price
 Gail Smith
 Alyce Smith-Cooper
 Faustina Solis
 Amalia Solorzano
 Cindy Stankowski
 Monica Stein
 Maureen Steiner
 Betsy and Bob Stevens
 Gabriella Swift
 Therese Tanalski
 Gaye Taubensee
 Barbara Templeton
 Mary Thigpen
 Jean Thompson
 Berta Villaescusa
 Mary Ann Wallner
 Ashley Walker
 Silvia Ward
 Annette Washington
 Water for Children Africa
 Maria Barbara Watson
 Sarah Williams
 Cheryl Zwack

Archives Report: A Treasure Trove of Suffrage Memorabilia

by Devon Atchison, Ph.D., Archivist

Greetings from the Archives! Our archival cataloguing project is moving along nicely; we have almost finished logging all on-site boxes and have started on the boxes that are stored in our off-site unit. As always, we are looking for amazing volunteers to help us with our archives project—including **grant writing**—and we remain hopeful that we can have a searchable database of our archives very soon!



(above) A WHMEC display including Alice Park's Suffrage Congress scrapbook, turn of the century postcards and Susan B. Anthony letters.

To pique potential volunteers' interest, I'm also kicking off a new part of the Archivist Report—a feature of one of our amazing archival collections—by discussing our Alice Park Archive.

We are especially lucky to have the archives of Alice Park, a turn-of-the-twentieth-century California woman who was very involved in a number of causes, including the Peace Movement, the early

Vegetarianism movement, and suffrage. Park was in frequent communication with noted suffrage leaders and our collection houses a multitude of correspondence between Park and women like Carrie Chapman Catt, Susan B. Anthony and others. Park's collection also includes a good

deal of ephemera such as her wonderful suffrage pin collection, illustrating some of the many different ways women across the country fought for suffrage. Park did not simply work for suffrage on the national level, however; she also worked to create an international focus on suffrage. In particular, she was quite proud of her service at the International Woman Suffrage Congress held in Budapest in 1913. Her scrapbook from this trip, on display at the museum, holds photographs of Ms. Park, her delegate badges, postcards and photographs—both scenic and personal—and some of the propaganda that the International Woman Suffrage Association distributed.

I invite you to come on by the museum and take a look for yourself at the Alice Park Archive. Stay tuned for next month's collection: Lucy Killea!

Join the New Legacy Club

We are happy to announce the successful launch of The Legacy Club to establish a sustainable financial base for the Women's History Museum and Educational Center. These are members who give regularly, making the work of the Museum possible -- enabling us to make a difference.

Our goal is \$5,000 a month to cover our operational expenses; including rent, staff, and insurance. Members of the Legacy Club are our core contributors. They allow us the freedom to focus on continued unique and inspirational education for our community.

Your monthly or quarterly gift has a huge impact on the stability and future of the museum. At your direction, we can either charge a credit or debit card, create direct payment or other convenient method. I invite you to consider a regular gift that's appropriate to your vision of our Museum in this community. We invite you to invest in our future.

If 200 people contribute \$25 a month, we will have met our goal. Please consider becoming a member of the Women's History Museum and Educational Center and join the Legacy Club today.

It's easy, and you'll feel good as well. Call Sarah at the Museum, 619 233-2962 for assistance.

Give Today... Create a Legacy for Tomorrow.

VOLUNTEER CORNER

Profiles of the people who make the museum a special place...

Kelly Thomas

Kelly has been a volunteer with the Women's History Museum since May 2006. She has helped out with many street fairs, community events and the San Diego County Women's Hall of Fame. Interested in the field of grant-writing, Kelly designed an internship for herself as a summer grant writer. She writes: "I volunteer at the Museum because I recognize the importance of honoring and remembering women of the past and of today."

Spring 2007 Program Highlights



(above) Armed with voter registration cards, SDSU Interns Alex Bell, Sydney Roberts and Evan Weatherford dress as historical "women voter characters" at the 3rd annual San Diego Indie Music Fest in North Park. The WHMEC created a temporary exhibit at Claire de Lune coffeehouse for Women's History Month. (Photo by Marti Kranzberg).



(above) The April 2007 opening reception of "Now*Then: Women and the Art of Tattooing", an exhibit curated by Flying Panther Tattoo and Gallery and hosted by the WHMEC. (Photo by Sarah Williams).

San Diego County Women's Hall of Fame Inductees

Front row—Ellen Revelle for Ellen Browning Scripps, Tanja Winter, Sara "Madre Sarita" Macias Vasquez. Back row—2007 "Sprit of the Hall of Fame" Awardee Joan Embery, Laurel Benchley Costello for Belle Benchley, Anna Tatar for Clara Estelle Breed, and Sister Patricia Shaffer, Ph.D. (Photo by Marti Kranzberg).



President's Message—A Letter from Ashley Gardner

It's hard to believe that the year is half over and summer is upon us!

We are making some amazing strides forward as the Museum grows and grows in service to our community.

The impact of new Board Members offering their unique skills and expertise to our work is visible already. **Larry Baza**, stepping forward as a volunteer Director of Development (and our first male Board Member) has resulted in a more streamlined and thoughtful approach to our fund raising efforts with the creation of **The Legacy Club**, which offers members an opportunity to effortlessly invest in the future of this organization. (Details on The Legacy Club are contained in this newsletter on page 4).

And **Heather Dauler**, a recent

San Diego transplant and Museum Board Member, has quickly put into action a plan to conduct an audit of Museum Procedures based on Regional and National Standards of Museum Operations.

We are still searching for a CPA to serve as Museum Treasurer. Meantime, we are so thankful to have long time Volunteer **Amada Dahl** serving as our Interim Treasurer as well as bookkeeper and trainer.

Our Professional Staff continues to plan and execute archives, library and exhibit projects. What a dream team with **Dr. Sue Gonda, Dr. Devon Atchison, Annette Jackson and Jennifer Spencer** working closely with our ED, **Dr. Sarah Williams!** Amazing!

This summer, we will redesign the back storage room to create

a more efficient space with new shelves. As well, we will create a new Women's Hall of Fame exhibit on the southeast wall of our space. If you are the type who loves to climb ladders and use a screwdriver, we welcome your participation.

This fall, our new and improved traveling educational exhibit, "Women Who Dare" will be installed in schools and libraries in the south bay area of San Diego and Chula Vista. This is one way we are able take the stories of strong and successful women of our past out into the community. We do it without charge and through the work of many volunteers.

There's more to come and more to do and I personally thank each and every one of you for your support and encouragement.

--Ashley Gardner



WOMEN'S HISTORY MUSEUM
AND EDUCATIONAL CENTER
2323 BROADWAY STREET #107
SAN DIEGO, CA. 92102

We're on the web!
Visit us online at
www.whmec.org

The WHM was incorporated in 1983 and features exhibits, archives, library, oral histories and educational programs dedicated to women's history.

Hours of operation are:
Tuesday – Friday, 11:00am - 4:00PM
Saturdays 12:00pm - 4:00pm
Phone: 619-233-7963 Fax: 619-233-6327
Email: info@whmec.org

Your membership helps keep women's history alive! You can donate online through PayPal at www.whmec.org!